

第76回

# 十日町雪まつり

TOKAMACHI SNOW FESTIVAL

2025

2/15 SAT ▶ 16 SUN

10:00-21:00

9:00-15:00



## FESTIVAL VENUES

### \* Inaka Plaza ①

[MAP | A-3]  
2/15 Sat 10:00~20:00  
2/16 Sun 9:00~15:00

### \* Yukinko Plaza ②

[MAP | A-3]  
2/15 Sat 9:00~19:00  
2/16 Sun 9:00~14:00

### \* Nakajo Sasayama Jomon Plaza ③

[MAP | B-2]  
2/15 Sat 10:00~17:30  
2/16 Sun 10:00~15:00

### \* Snowland Shinza ④

[MAP | C-2]  
2/15 Sat 9:30~19:30  
2/16 Sun 9:30~14:30

### \* Nanawa Land ⑤

[MAP | CITY AREA MAP]  
2/15 Sat 10:00~20:00  
2/16 Sun 10:00~12:00

### \* O-mo-te-na-shi Plaza ⑥

[MAP | CITY AREA MAP]  
2/15 Sat 10:00~16:00  
2/16 Sun 10:30~15:00

### \* West side Fureai Plaza ⑦

[MAP | CITY AREA MAP]  
Held only on 2/15 Sat  
9:00~16:00

### \* Station East exit Plaza ⑧

[MAP | CITY AREA MAP]  
2/15 Sat 9:00~20:00  
2/16 Sun 9:00~12:00

### \* Bunjirou Plaza ⑨

[MAP | CITY AREA MAP]  
Held only on 2/15 Sat  
10:00~17:00

### \* Honcho 1-chome Najodano Plaza ⑩

[MAP | CITY AREA MAP]  
Held only on 2/15 Sat  
10:00~20:00

### \* Tatenokoshi Plaza ⑪

[MAP | CITY AREA MAP]  
2/15 Sat 9:00~20:00  
2/16 Sun 9:00~15:00

### \* Tsumari Plaza ⑫

[MAP | CITY AREA MAP]  
2/15 Sat 9:30~20:00  
2/16 Sun 9:30~14:00

### \* Tamugi Plaza ⑬

[MAP | D-2]  
Held only on 2/16 Sun  
9:00~15:00

### \* Mizusawa Snow Festival Plaza ⑭

[MAP | E-3]  
Held only on 2/16 Sun  
10:00~15:00

## Loop bus for the Snow Sculptures venues



Let's enjoy all the Festival Venues around the city starting from Snow Rich Park and Tokamachi Station West exit

**Fare** ● Loop ticket / 200 yen per person (unlimited rides for the 2 days)  
\* Free for junior high school students and younger

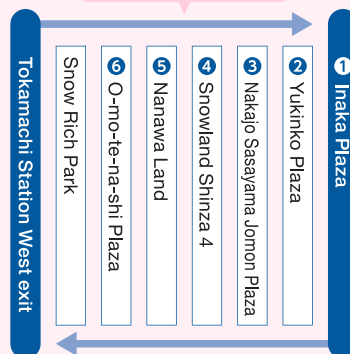
**Where to buy** ● Snow Festival InfoPoints (located at Snow Rich Park and Tokamachi Station West exit)  
● Michi-no-Eki Cross-10

**Route** ● Two routes: to Gejo area, to Kawaji area

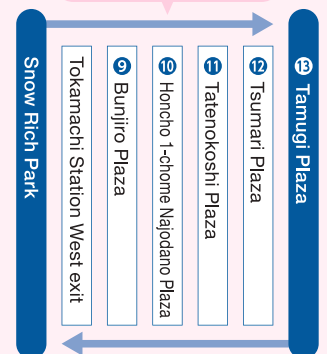
Scan for more information about loop bus for the Snow Sculptures venues



### Gejo area



### Kawaji area



- Loop bus approximate interval time: Gejo area about 20 minutes, Kawaji area about 30 minutes
- Buses time frequency may vary depending on the weather and road conditions



# Tokamachi Snow Festival, which begun with the idea of "Treat snow as your friend and have fun together", this year welcomes its 76th edition.

A variety of Festival Venues and Snow Artworks will be held at several locations, with Tokamachi, Echigo-Mizusawa, and Gejo stations as starting points.



## Main Area: Snow Rich Park Nishi Elementary School Ground

Here visitors can participate to different activities, watch on stage shows, such as local bands, and will be able to enjoy the "Rainbow Snow fireworks show" that will be lunched Sat 2/15 starting at 19:00. Scan the QRcode for more details about the Main Area (Japanese only)



### Main activities

※Held only on Sat 15th

Stage shows, Activities, Snow Sculptures, Food & Beverage stands, West Snowpark, Exhibition of artworks from Echigo Tsumari Art Field, Football class by FC Echigo Tsumari\*, Rainbow Snow fireworks show\*, Kin-Ball tournament on snow\*

### Stage timetable

#### Sat 15th Stage Show

- \*10:15~ FC Echigo Tsumari
- \*10:30~ Highschool Singing Contest finals
- \*12:00~ LAZO DANCE SCHOOL
- \*12:30~ I wish
- \*14:00~ DSS Dance school
- \*15:15~ THE SOULMATICs with Tokyo Sing For Life Choir
- \*16:00~ Mamekai
- \*16:45~ Mr.Kouichi & Friends
- \*17:30~ THE SOULMATICs with Tokyo Sing For Life Choir
- \*18:30~ Kimono Runway Show (Mitsuyoshi Design Studio)
- \*19:00~ Rainbow Snow fireworks
- \*19:15~ DJ Koz
- \*20:00~ Yosuke Takano (TKNO / conoyo)

#### Sun 16th Stage Show

- \* 9:15~ DJ neo & DJ tak
- \*11:00~ HIGH RIZM (Tokamachi Comprehensive High School music club)
- \*11:45~ Echigo Gozeuta Saizou's
- \*13:00~ Sign Singer Goriki Kakeru
- \*14:00~ Kimono Runway Show (Mitsuyoshi Design Studio)



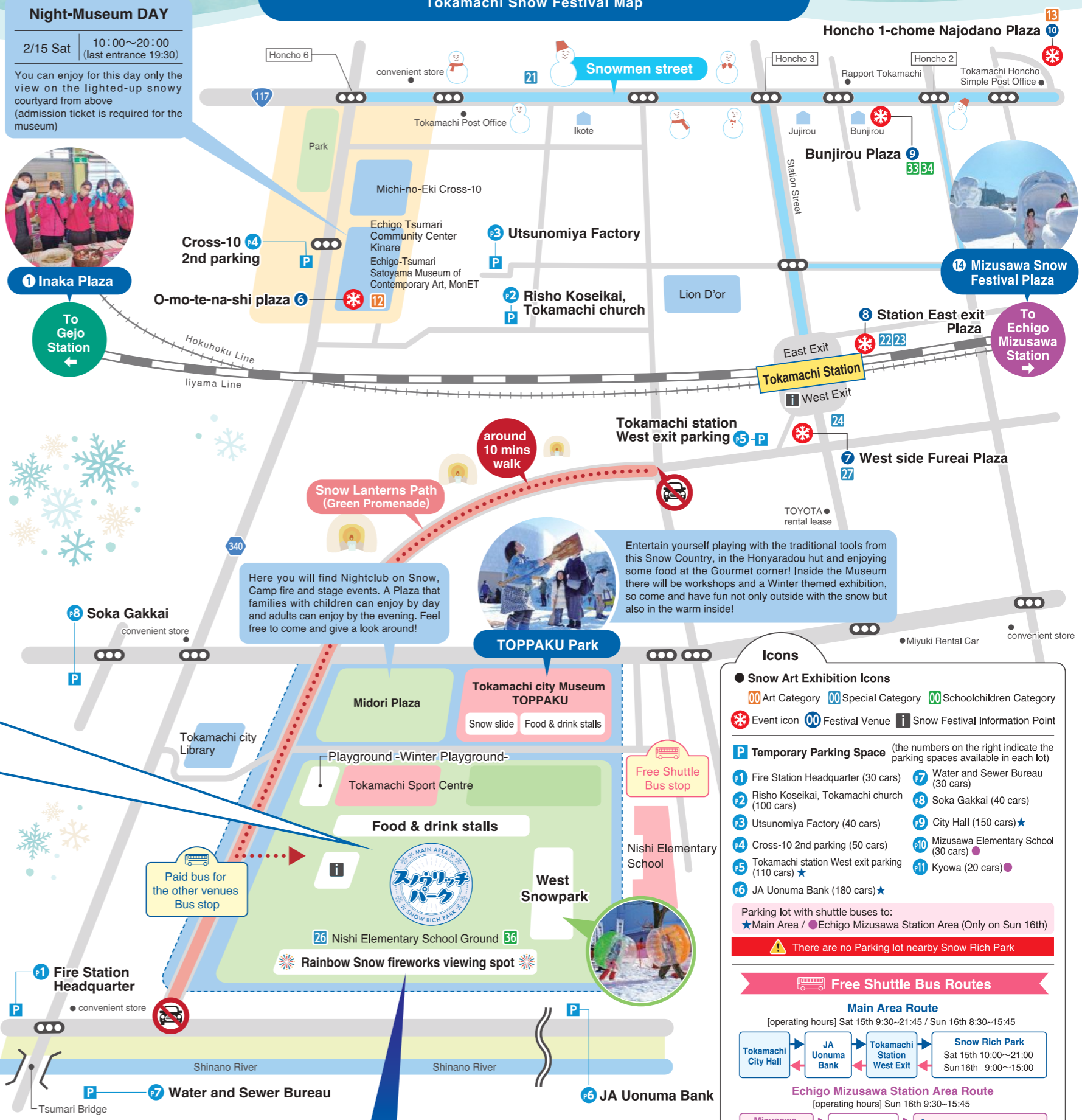
### photos from the 75th edition



Don't forget to visit the Snow Sculptures in the other areas too!  
[More details on the back]

# Tokamachi city area map

Tokamachi Snow Festival Map



**Held on Sat 15th**  
19:00~19:15  
Rainbow Snow Fireworks Display Time

# Snow Art & Festival Square Map

## Icons

- Snow Sculptures Exhibition Icons
- ❄ Event icons
- 1~18 Art Category
- 1~14 Festival Venue
- 19~28 Special Category
- ❄ Snow Festival Information Point
- 29~45 Schoolchild Category

## Temporary Parking Space

- (the numbers on the right indicate the parking spaces available in each lot)
- 1 Fire Station Headquarter (30 cars)
  - 2 Risho Koseikai, Tokamachi church (100 cars)
  - 3 Utsunomiya Factory (40 cars)
  - 4 Cross-10 2nd parking (50 cars)
  - 5 Tokamachi Station West exit parking (110 cars)
  - 6 JA Uonuma Bank (180 cars)
  - 7 Water and Sewer Bureau (30 cars)
  - 8 Soka Gakkai (40 cars)
  - 9 City Hall (150 cars)
  - 10 Mizusawa Elementary School (30 cars)
  - 11 Kyowa (20 cars)

- Parking lot with shuttle buses to:
- ★ Main Area
  - Echigo Mizusawa Station Area (Only on Sun 16th)

⚠ There are no Parking lot nearby Snow Rich Park

**Free service**

76th Tokamachi Snow festival  
**Free shuttle bus routes**

● Some of the Parking lots are connected by bus to the [Main Area] and to the [Mizusawa Snow Festival plaza]

● The shuttle buses interval time is around 20 mins

● Buses time frequency may vary depending on weather and road conditions

Scan here for more details about temporary parking lots and free shuttle buses

**Main Area Route**  
[operating hours] Sat 15th 9:30~21:45 / Sun 16th 8:30~15:45

Tokamachi City Hall → JA Uonuma Bank → Tokamachi Station West Exit → Snow Rich Park  
Sat 15th 10:00~21:00 / Sun 16th 9:00~15:00

**Echigo Mizusawa Station Area Route**  
[operating hours] Sun 16th 9:30~15:45

Mizusawa Elementary School → Kyowa → Mizusawa Snow Festival Plaza  
Sun 16th 10:00~15:00

**Paid service** Ticket fare 200 yen /

**Loop bus connecting the snow sculptures venues**

● Loop bus approximate interval time: Gejo area about 20 minutes, Kawaji area about 30 minutes

● Buses time frequency may vary depending on the weather and road conditions

Where to buy ● Snow Festival InfoPoints (located at Snow Rich Park and Tokamachi Station West exit)

● Michi-no-Eki Cross-10

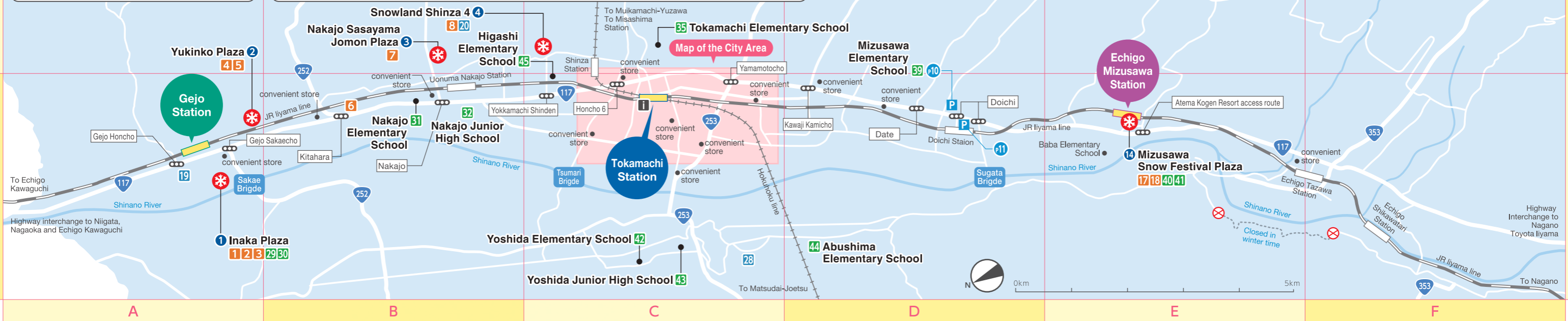
Scan for more information about loop bus for the Snow Sculptures venues

**Gejo area**

- 1 Inaka Plaza
- 2 Yukinko Plaza
- 3 Nakajo Sasayama Jomon Plaza
- 4 Snowland Shinza 4
- 5 Nanawa Land
- 6 O-mo-te-na-shi Plaza

**Kawaji area**

- 7 Tsumari Plaza
- 8 Tatenokoshi Plaza
- 9 Honcho 1-chome Najodano Plaza
- 10 Bunjirou Plaza
- 11 Tokamachi Station West exit
- 12 Tsumari Plaza



## Train Schedule

JR Iiyama line

Check the Hokuho line timetable here

Gejo Station			Tokamachi Station			Echigo Mizusawa station		
Time	To Nagano	To Echigo Kawaguchi	Time	To Nagano	To Echigo Kawaguchi	Time	To Nagano	To Echigo Kawaguchi
8	14	34	8	30	25	8	40	18
9	21		9			9		
10			10			10		
11			11	43		11	54	
12		42	12		33	12		53
13	29	48	13	44	39	13	55	
14	33		14			14		56
15		30	15		21	15		
16	16	36	16	14	26	16	25	
17	25	45	17	37	36	17	48	22
18	42		18			18		46
19		16	19	3	7	19	14	
20	8	59	20		49	20		15
21	46		21	40		21	51	

\*Schedule on Sat 15th and Sun 16th. Please check JR East website for extra information.

## Snow Artworks

\*Some snow artworks may be subject to change, depending on the snowfall conditions

Scan here for details about the festival venues

Artwork No. / Artwork location name	Map
<b>"Art Category": 18 snow sculptures</b>	
1 1 Inaka Plaza	A-3
2 1 Inaka Plaza	A-3
3 1 Inaka Plaza	A-3
4 2 Yukinko Plaza	A-3
5 2 Yukinko Plaza	A-3
6 Near Kitahara crossing	B-3
7 3 Nakajo Sasayama Jomon Plaza	B-2
8 4 Snowland Shinza 4	C-2
10 Tokamachi viaduct streetside	City Area
11 Honcho 7-chome	City Area
12 6 O-mo-te-na-shi Plaza	City Area
13 10 Honcho 1-chome Najodano Plaza	City Area
<b>"Special Category": 10 snow sculptures</b>	
19 National Road 117, near Gejo Police station	A-3
20 4 Snowland Shinza 4	C-2
21 Murao Electrics Parking lot	City Area
22 8 Station East exit Plaza	City Area
23 8 Station East exit Plaza	City Area
24 Tokamachi Station West exit Plaza	City Area
25 Chitose Park	City Area
26 Snow Rich Park	City Area
27 7 West side Fureai Plaza	City Area
28 North Abuzaka Fureai centre	C-3

14 11 Tatenokoshi Plaza	City Area
15 12 Tsumari Plaza	City Area
16 13 Tamugi Plaza	D-2
17 14 Mizusawa Snow Festival Plaza	E-3
18 14 Mizusawa Snow Festival Plaza	E-3
<b>"Schoolchildren Category": 17 snow sculptures</b>	
29 1 Inaka Plaza	A-3
30 1 Inaka Plaza	A-3
31 Nakajo Elementary School	B-3
32 Nakajo Junior High School	B-3
33 9 Bunjirou Plaza	City Area
34 9 Bunjirou Plaza	City Area
35 Tokamachi Elementary School	C-2
36 Snow Rich Park	City Area
37 12 Tsumari Plaza	City Area
38 12 Tsumari Plaza	City Area
39 Mizusawa Elementary School	D-3
40 14 Mizusawa Snow Festival Plaza	E-3
41 14 Mizusawa Snow Festival Plaza	E-3
42 Yoshida Elementary School	C-3
43 Yoshida Junior High School	C-3
44 Abushima Elementary School	D-3
45 Higashi Elementary School	C-3

■ Companies and organizations that supported us (as of January 24th, in no particular order, titles omitted)



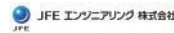
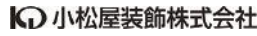
あなたに、ベスト・ウェイ。



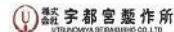
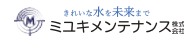
— 地域を結び より強く —



よろこびがつなぐ世界へ



とおかまち湯めぐり  
実行委員会



■(一社)新潟県建設業協会十日町支部 (株)飯塚建設/大村建設(株)/(株)生越土建/上村建設工業(株)/(株)吉楽土建/協和建設(株)/(株)三高土木/上越舗道(株)/(株)鈴木土建/(株)大海組/(株)高澤組/(株)高橋組/(株)高橋工務所/(株)司工務店/南雲土建(株)/羽鳥建設(株)/(株)福島建設/(株)富剛建設/(株)丸山工務所/宮沢建設(株)/(株)村山組/(株)村山土建/(株)室野建設/(株)涌井土木/井川建設(株)/(株)共立舗装/(株)児玉建設/(株)昭和建設/ダイワ電気工事(株)/(株)拓越/(株)星野建設/(株)室岡組/(株)植木組十日町営業所/(株)佐藤土建十日町営業所/中野建設工業(株)十日町支店/福田道路(株)十日町営業所

■十日町商工会議所 (株)根茂レース/税理士法人 和久井会計事務所/(株)村山土建/(株)ミヤコヤ/(有)田中新聞店/タナベ防災(株)/十日町タイムス社/(株)妻有新聞社/(株)山津電機/水落会計事務所/(株)小泉工業/(有)山田製作所/(株)恒樹園新潟/(株)レポート十日町/共立観光(株)/(株)村山興業/(有)若山総合保険サービス/(株)松喜屋/(株)十測/(株)ハピネス/(株)クロバフォー

■十日町砂利採取販売協同組合 十日町砂利(株)/(株)長谷川砂利/(株)十日町建材/(株)福島砂利丸福生コン/丸五物産(株)/福田石材(株)/(有)引間建材

■十日町金融団

■十日町地区自動車整備協会 十日町車検センター協業組合/(株)岡村自動車/小川自動車(株)/三洋自動車(株)/(有)岩田自動車/(株)田村自動車/(株)吉田商会/利工モータース/大島自動車(株)/(有)佐藤輪店/十日町自動車(株)

■十日町電気工事協同組合 大島電気(株)/(株)庭野電機商会/(株)後藤電機/(株)村尾電気/信栄電機工業(株)/十日町電設工業(株)/ヤマガ電業/(有)富井電気/ダイワ電気工事(株)/(株)志賀電設/岡田電気産業(株)/昭和電機産業(株)/丸新電機照明(株)

■十日町市管工事業協同組合 (有)アセス/(株)植木組 十日町営業所/大隆建設(株)/大村建設(株)/(有)小川電機商会/(有)技工住設/(株)共同メンテナンス/(有)倉俣住宅設備/佐藤水道/(同)しぶみメンテナンス/新栄工業(株)/(有)新興住設/(株)鈴木土建/スドー設備/(株)拓越/(有)遠田設備/(有)富井電気/(有)ナカ設備工業/(株)羽生田/(株)樋口水道/(有)樋口水道/(株)ヒノデ/北越融雪(株)/(株)美佐佐/(株)村熊商店/(株)山岸産業/(株)大和開発/(株)山松商店/(有)和伴設備

■十日町建築組合 ■十日町織物工業協同組合

■新潟県建築士会中魚沼支部 (有)阿部設計事務所/齋藤建築設計事務所/塩川設計室/スタジオエチゴ(同)/(株)創エンジニアリング/(株)塚田設計事務所/(有)富井富士子事務所/(株)万有設計/結建築設計室

■東北電力グループ 東北電力(株)長岡営業所/東北電力ネットワーク(株)十日町電力センター/(株)ユアテック魚沼営業所/東北送配電サービス(株)十日町営業所/(株)根津電設(ユアテック協力店)/(株)佐藤工務所(ユアテック協力店)

■十日町旅館組合 旅館 清水屋/原田屋旅館/ハマヤ荘/香番館/心の宿やすらぎ/ビジネスホテル信江/塩ノ又温泉 湯元荘/ホテルむかでや/民宿かみや/林屋旅館/ホテルしみず

■十日町染色整理協同組合 (株)イキ/(有)エーデルワイス工芸社/(有)井上商店/魚沼整染(株)

■十日町飲食店組合 ■十日町駅通り商店街振興組合 ■十日町市本町四丁目商店街振興組合 ■十日町市本町三丁目商店街振興組合 ■十日町市本町二丁目商店街振興組合

■十日町市高田町一丁目商店街振興組合

■十日町市本町一丁目商店街振興組合 (株)朝日堂/紺商(株)/化粧品くしや/有)田中新聞店/なおい理容店/本町一丁目簡易郵便局

■十日町市本町5・6丁目商店街振興組合

(株)エフエムとおかまち/中越住電装(株)/(株)メイケン/(株)滝沢印刷/(株)マイシステム/(株)オリス/(株)リオン・ドールコーポレーション十日町店/(株)ナカノアイシステム十日町事業所

(株)松乃井酒造場/十日町鉄工業協同組合/(一社)新潟県労働衛生医学協会十日町検診センター  
新潟県労働金庫十日町支店/(株)ナルサワコンサルタント柏崎支店/(株)BSNアイネット/(一財)上越環境科学センター/(株)NNCエンジニアリング/(株)NICHUO北陸営業所/信越ビル美装(株)/(株)興和十日町営業所/エヌシーイー(株)/(株)美郷/キリンビバレッジ(株)/大原技術(株)/(有)石打自動車工業/緑水工業(株)/ヴェオリア・ジェッツ(株)北陸支店/(有)松屋/(有)小島屋製菓店/高橋昇男税理士事務所/(有)ダスキン十日町/十日町郵便局/(株)ダイウウ/(株)双葉/(株)小嶋屋総本店/ニュー・グリーンピア津南/(株)A・ファーム雪の十日町/(株)十日町自動車学校/信越スペースシステム(株)/(株)国土開発センター新潟支店/田順アート/(株)原信/(株)グリーンシグマ/(株)羽生田/十日町地域森林組合/(株)北陸マックス/サンタ・クリエイト/カネコ工業(株)/(株)日紋/立正佼成会十日町教会/(株)新潟県厚生事業協同公社/(有)十日町廃棄物清掃公社/ティール・アール・ワイ(株)/村山公認会計士事務所/(有)第一不動産/雪國の宿 高半/(株)ネットワーク21/(株)レックス 十日町営業所/(株)スタックス/ゆきぐに森林組合/(株)新環境分析センター/プライムテック(株)/新潟総合警備保障(株)/(有)小山土木/(株)ハセガワ/(株)イキ/富士建設工業(株)/セコム上信越(株)/(株)十日町新聞社/(有)直志庵さかの/(株)滝泰/(一社)十日町青年会議所/十日町ロータリークラブ/きもの絵巻館/クボタ環境エンジニアリング(株)/(株)商工組合中央金庫 長岡支店/宮本警報器(株)/国土防災技術(株)新潟支店/新潟県信用保証協会長岡支店/(有)佐藤教材店/アルファー(株)/税理士法人 柁測会計事務所十日町事務所/(株)柳農産/(株)サンウッド新潟/(株)コバリキ/(株)十日町環境/銀嶺タクシー(株)/日本ケーブル(株)/グリーン産業(株)/SOメンテナンス(株)/(株)雄大/十日町市文化協会連合会/津南工芸組合/(株)第一実業ダズ十日町きらめき店/十日町地区生コンクリート協同組合/名代生そば由屋/そばや清兵衛/(株)トミス長野営業所/(株)宮内測量設計事務所/シーアイシー/鹿島建設(株)北陸支店/新潟県理容生活衛生同業組合十日町支部/ホテルニュー十日町/(株)大熊工業/(株)渡辺リネン/昇工業(株)魚沼営業所/東頭バス(株)